



# GOT2 mouse mAb

<b>Catalog No</b>	YP-Ab-03480
<b>Isotype</b>	IgG
<b>Reactivity</b>	Human;Mouse
<b>Applications</b>	WB
<b>Gene Name</b>	got2
<b>Protein Name</b>	
<b>Immunogen</b>	Recombinant protein corresponding to fragment (aa/225-430) GOT2 .
<b>Specificity</b>	This antibody detects endogenous levels of GOT2.
<b>Formulation</b>	Liquid in PBS containing 50% glycerol, 0.5% BSA and 0.02% sodium azide.
<b>Source</b>	Monoclonal, Mouse
<b>Purification</b>	The antibody was affinity-purified from mouse ascites by affinity-chromatography using epitope-specific immunogen.
<b>Dilution</b>	WB 1:500-2000
<b>Concentration</b>	1 mg/ml
<b>Purity</b>	≥90%
<b>Storage Stability</b>	-20°C/1 year
<b>Synonyms</b>	AATM_HUMAN ; AL022787 ; Aspartate aminotransferase ; Aspartate aminotransferase 2 ; Aspartate aminotransferase, mitochondrial ; ASPATA ; E 2.6.1.1 ; FABP 1 ; FABP pm ; FABP-1 ; FABPpm ; Fatty acid binding prote ; Fatty acid-binding protein ; FLJ40994 ; Glutamate oxaloacetate transaminas 2 ; Glutamate oxaloacetate transaminase 2, mitochondrial ; Glutamate oxaloacetate transaminase, mitochondrial ; Glutamic oxaloacetic transaminase 2, mitochondrial (aspartate aminotransferase 2) ; Got 2 ; GOT2 ; KAT4 ; KAT ; Kynurenine aminotransferase IV ; mAspAT ; MGC102129 ; MGC115763 ; mitAAT ; mitochondrial ; Mitochondrial aspartate aminotransferase ; OTTMUSP00000017748 ; Plasma membrane fatty acid binding protein ; Plasm membrane-associated fatty acid-binding protein ; Transaminase A.
<b>Observed Band</b>	47kD
<b>Cell Pathway</b>	Mitochondrion matrix . Cell membrane . Exposure to alcohol promotes translocation to the cell membrane. .
<b>Tissue Specificity</b>	Epithelium,Gastric mucosa,Muscle,
<b>Function</b>	catalytic activity:L-aspartate + 2-oxoglutarate = oxaloacetate + L-glutamate.,cofactor:Pyridoxal phosphate.,function:Facilitates cellular uptake of



long-chain free fatty acids.,miscellaneous:In eukaryotes there are cytoplasmic, mitochondrial and chloroplastic isozymes.,similarity:Belongs to the class-I pyridoxal-phosphate-dependent aminotransferase family.,subunit:Homodimer.,

### Background

Glutamic-oxaloacetic transaminase is a pyridoxal phosphate-dependent enzyme which exists in cytoplasmic and inner-membrane mitochondrial forms, GOT1 and GOT2, respectively. GOT plays a role in amino acid metabolism and the urea and tricarboxylic acid cycles. The two enzymes are homodimeric and show close homology. Two transcript variants encoding different isoforms have been found for this gene. [provided by RefSeq, Oct 2013],

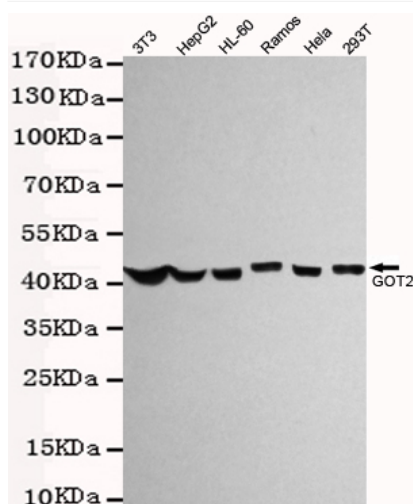
### matters needing attention

Avoid repeated freezing and thawing!

### Usage suggestions

This product can be used in immunological reaction related experiments. For more information, please consult technical personnel.

## Products Images



Western blot detection of GOT2 in 3T3, HepG2, HL-60, Ramos, Hela and 293T cell lysates using GOT2 antibody (1:1000 diluted). Predicted band size: 47 kDa. Observed band size: 47 kDa.